

AREA CALCULATIONS

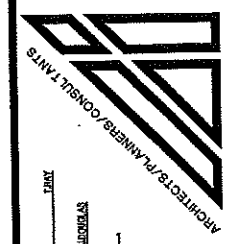
FIRST FLOOR LIVING:	6,148 SQ. FT.	COVERED PATIO:	734 SQ. FT.
SECOND FLOOR LIVING:	4,519 SQ. FT.	SUNDECK (2ND FL):	253 SQ. FT.
THIRD FLOOR LIVING:	1,106 SQ. FT.	BALCONY (2ND FL):	249 SQ. FT.
TOTAL LIVING:	11,767 SQ. FT.	SUNDECK (3RD FL):	87 SQ. FT.
GARAGE:	928 SQ. FT.	BALCONY (3RD FL):	410 SQ. FT.
ENTRY:	284 SQ. FT.		

- REVISIONS:
- 1. [Symbol] [Description]
 - 2. [Symbol] [Description]
 - 3. [Symbol] [Description]
 - 4. [Symbol] [Description]
 - 5. [Symbol] [Description]

All design arrangements and dimensions are shown as indicated or represented by the drawing and are subject to change without notice. The architect shall not be responsible for any errors or omissions in the drawings or for any consequences arising therefrom. The contractor shall be responsible for all dimensions and conditions shown on these drawings and for any variations therefrom.

T. RAY
ARCHITECT
FL. 11617

FOR:
A NEW CUSTOM RESIDENCE
KOTA KONSTRUCTION, INC.
RIVERA FLORIDA
BROWARD COUNTY,
FT. LAUDERDALE,
ARCHITECTONIC
22200 CRANBROOK RD.
BOCA RATON, FLORIDA 33428
PHONE: (561) 883-0403
FAX: (561) 883-0405



Designed by: T. RAY
Drawn by: M. JORDAN
Checked by: [Blank]
Date: MARCH 16, 2002
Scale: 1/8" = 1'-0"
Project #: 0001

FIRST FLOOR PLAN

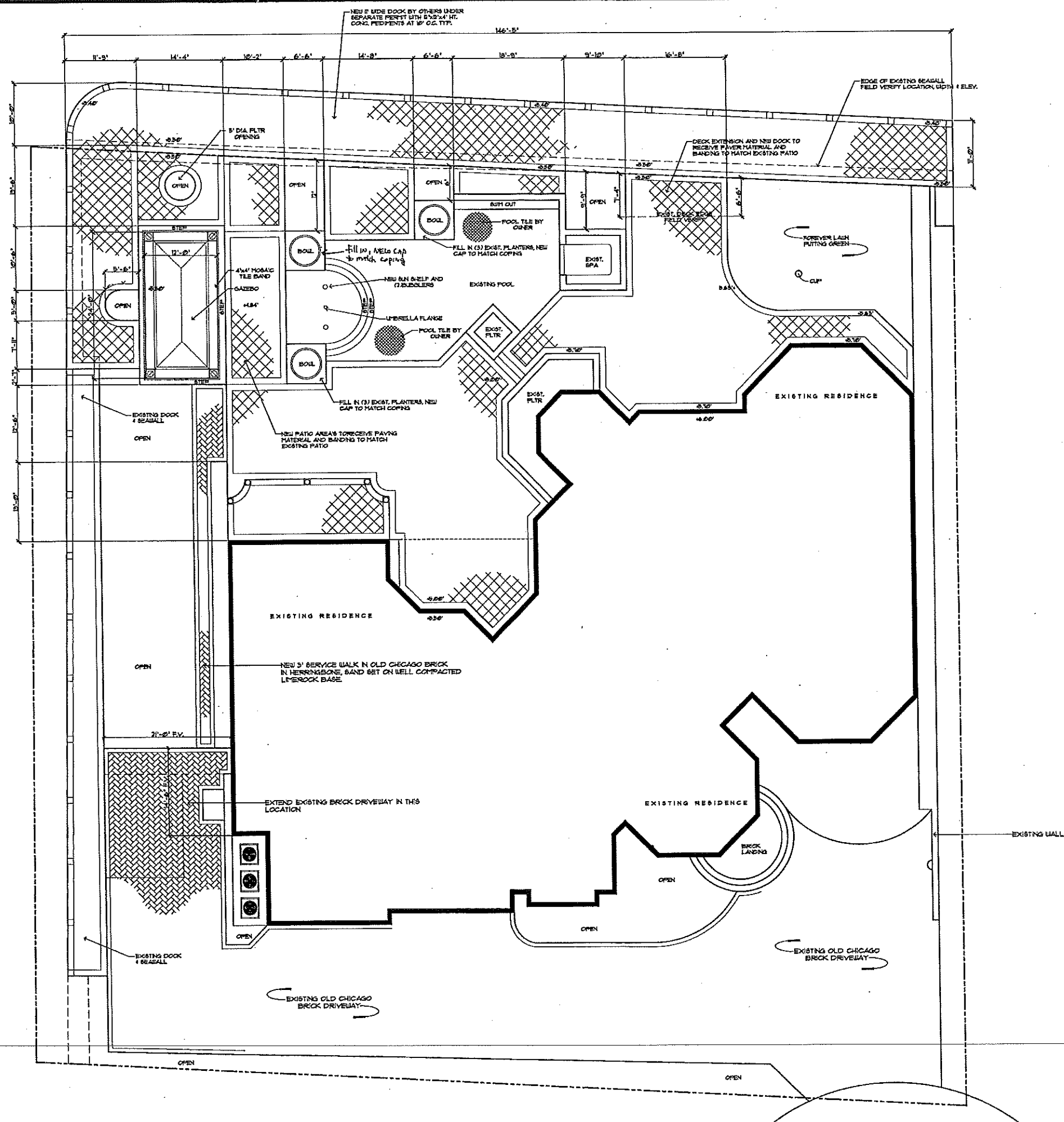
ZOLEY RESIDENCE
828 Solar Isle Drive
Fort Lauderdale, Florida
Layout / Grading Plan

DATE: 07.28.08
DRAWN BY: GWK
SCALE: 1/8"=1'-0"
REVISIONS:



SEAL:

SHEET:
LG-1



C:\Projects\George Keen\828 Solar Isle\Zoley Residence.dwg, 7/27/2008 4:01:05 PM, DWG6 ePlot.pc3