

2408 North Atlantic Blvd. - Ground Level - Furniture Floor Plan  
Scale: 1/4" = 1'-0"

Revisions:


**Interiors by Steven G. Inc.**  
Interior Design  
2818 CENTER PORT CIRCLE, POMPANO BEACH, FLORIDA 33064  
954-753-8225 FAX 954-753-7548

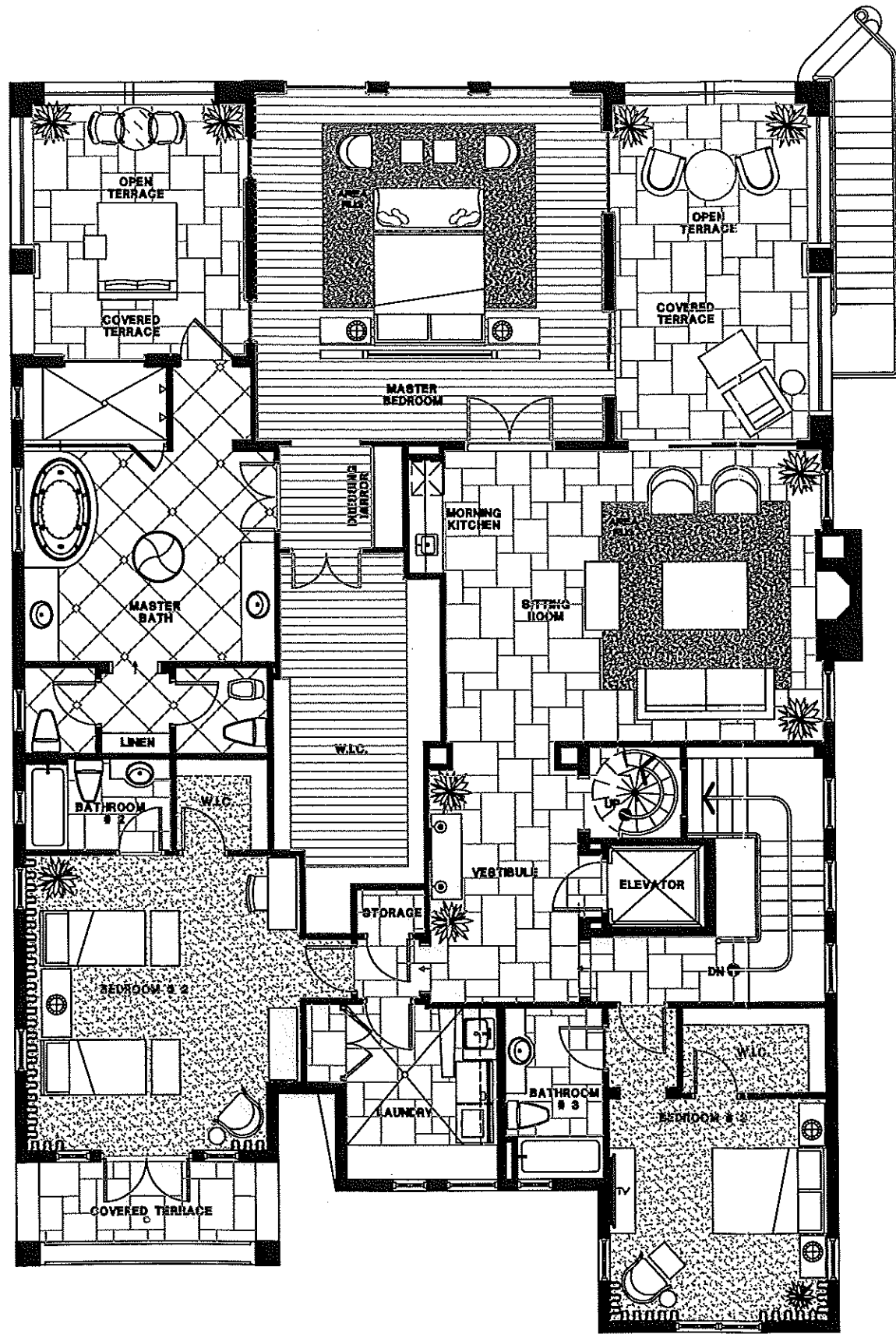
I hereby certify that the design shown on this plan was prepared by me or under my direct supervision and that I am a duly licensed professional architect in the State of Florida. I am not providing any services on this plan which require a license in another profession. I am not providing any services on this plan which require a license in another profession. I am not providing any services on this plan which require a license in another profession.

I hereby certify that the design shown on this plan was prepared by me or under my direct supervision and that I am a duly licensed professional architect in the State of Florida. I am not providing any services on this plan which require a license in another profession. I am not providing any services on this plan which require a license in another profession. I am not providing any services on this plan which require a license in another profession.

2408 North Atlantic Blvd.  
Pompano Beach, Florida

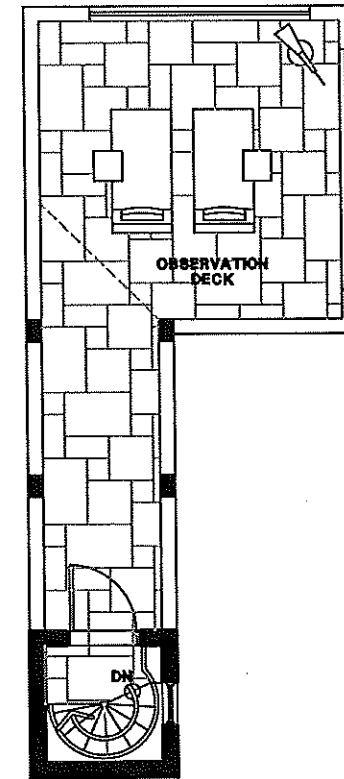
Scale: AS SHOWN	Drawn By: LEE
Date: 06-24-09	Project No: xxx
Last Revised:	File: jobs/Folder.dwg

sheet #  
**ID-1.1**



2408 North Atlantic Blvd. - Second Level - Furniture Floor Plan

Scale: 1/4" = 1'-0"



2408 North Atlantic Blvd. - Observation Deck - Furniture Floor Plan

Scale: 1/4" = 1'-0"

Revisions:

*Interiors by Steven G. Mc*  
Interior Design

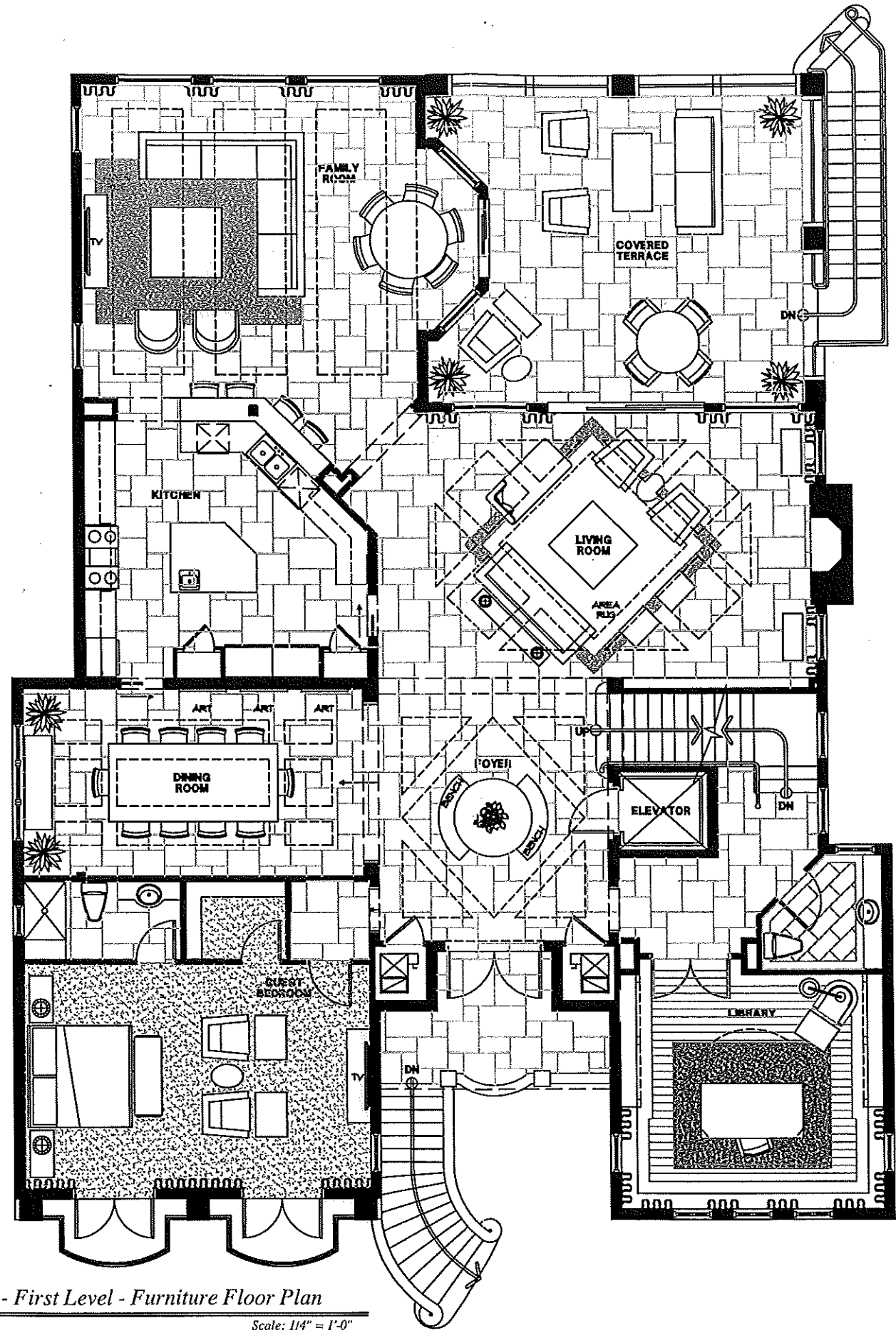
2618 CENTER PORT CIRCLE POMPANO BEACH, FLORIDA 33084  
954-755-8225 FAX 954-755-7548

This plan is subject to the  
approval of the local  
authorities. It is not to be  
used for construction  
without the approval of  
the local authorities.  
Model by  
Steve G. Mc  
Interior Design

This plan is subject to the  
approval of the local  
authorities. It is not to be  
used for construction  
without the approval of  
the local authorities.  
Model by  
Steve G. Mc  
Interior Design

2408 North Atlantic Blvd. Pompano Beach, Florida	
Scale: AS SHOWN	Drawn By: LEE
Date: 06-24-09	Project No: xxxx
Last Revised:	File: jobs/folder.dwg

sheet #  
ID-1.3



2408 North Atlantic Blvd. - First Level - Furniture Floor Plan  
 Scale: 1/4" = 1'-0"

Revisions:


**Interiors by Steven G. Mc**  
 Interior Design  
 2818 CENTER PORT CIRCLE, POMPANO BEACH, FLORIDA 33064  
 954-735-8223 FAX 954-735-7946

As shown and noted on these drawings, the contractor shall be responsible for obtaining all necessary permits and licenses for the work shown. The contractor shall also be responsible for obtaining all necessary approvals from the appropriate authorities. The contractor shall also be responsible for obtaining all necessary approvals from the appropriate authorities. The contractor shall also be responsible for obtaining all necessary approvals from the appropriate authorities.

These drawings are the property of the designer and shall remain the property of the designer. No part of these drawings shall be reproduced, stored in a retrieval system, or transmitted in any form or by any means, electronic, mechanical, photocopying, recording, or by any information storage and retrieval system, without the prior written permission of the designer. The contractor shall be responsible for obtaining all necessary approvals from the appropriate authorities.

2408 North Atlantic Blvd. Pompano Beach, Florida	
Scale: AS SHOWN	Drawn By: LEE
Date: 06-24-09	Project No: xxxx
Last Revised:	File: jobs/Folder.dwg
sheet #	
ID-1.2	